



BUILDING OVERVIEW

Total Building Size:	358,973 SF
Available Space:	Up to +-181,600 SF
Zoning:	M-1
Lot Size:	21.2 Acres
Clear Height:	29' - 81'
Docks:	2
Drive-Ins:	6
Cranes:	See Crane Exhibit - Pages 2 & 3
Construction:	Metal
Sprinkler:	Yes, Full System in Place
Power:	Heavy (verify with electrician)
Year Built:	1967 (average)
Parking:	86 Surface Lot Spaces

FEATURES

- Bays 1,2,3,5, and 6 are available.
- Heavy power throughout.
- 102,065 blue collar workers within a 5 mile radius.
- Union Pacific rail access to site.
- Bus route #76 stops 0.3 miles of the site.
- .7 miles to the nearest I-94 on-ramp (70th Street).
- Located 2.2 miles away from Miller Park.
- 2,700-5,435 SF office suites available.
- 200 ton cranes with up to 68' hook height.

ECONOMICS

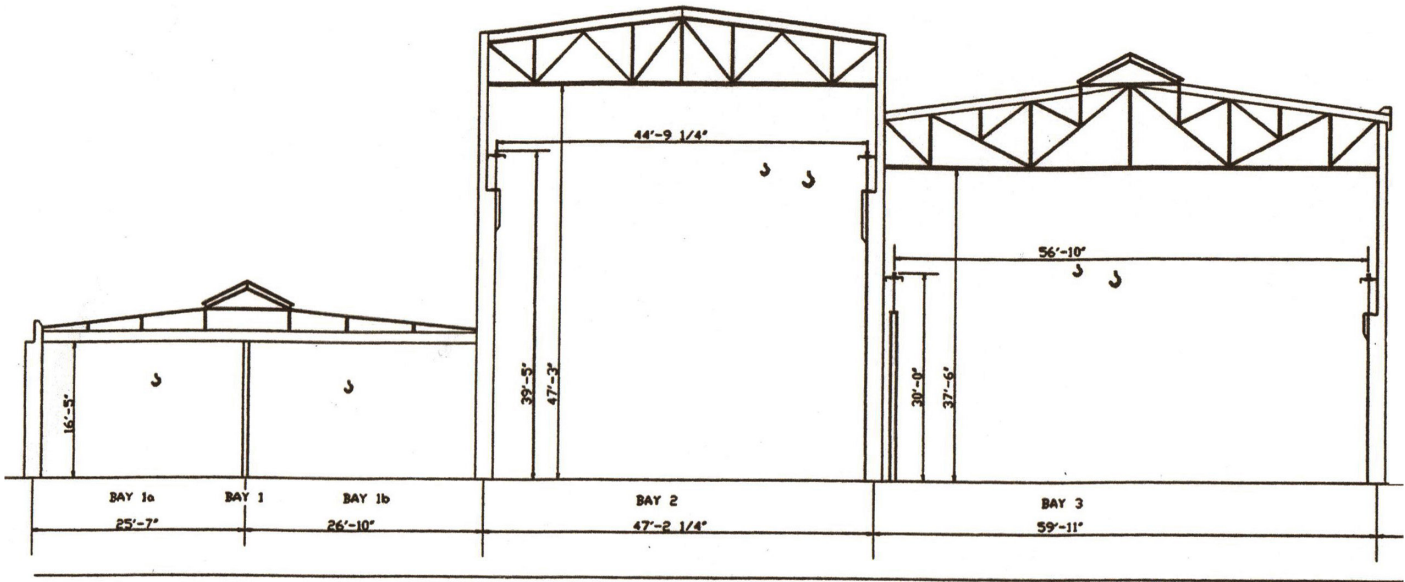
Operating Expenses (NNN)	\$1.37/SF (NNN)
Lease Rate:	\$3.75/SF (NNN)

Jeff Hoffman, CCIM, SIOR
 Principal
 414.203.3038
 jhoffman@boerke.com

Chad Vande Zande, SIOR
 Principal
 414.203.3049
 cvandezande@boerke.com

Nick Unger
 Real Estate Advisor
 414.203.3016
 nunger@boerke.com

731 N Jackson Street
 Suite 700
 Milwaukee, WI 53202
 Main: 414.347.1000
boerke.com



Bay 1 Crane Data Specs

Crane No.	Capacity	Max. Lift
41625 W	2	12'-0"
31509 C	5	12'-0"
41624 E	2	12'-0"
500521b	2	10'-0"

Bay 2 Crane Data Specs

Crane No.	Capacity	Max Lift		Hook to Column	
		Main	Audl	North	South
15373	50/15	35'-0"	37'-0"	3'-0"	4'-0"

Bay 3 Crane Data Specs

Crane No.	Capacity	Max Lift	
		Main	Audl
50032 W	25/10	25'-0"	
50033 E	50/10	22'-7"	
50034 Wg	3		
50048 Cg	3		
50049 Eg	3		

Bay 5 & 6 Crane Data Specs

Capacity	Under Hook Height	Clear Height
20/5	15'10"	28'8"
10	15'10'	28'8"
5	15'10'	28'8"

Jeff Hoffman, CCIM, SIOR
 Principal
 414.203.3038
 jhoffman@boerke.com

Chad Vande Zande, SIOR
 Principal
 414.203.3049
 cvandezande@boerke.com

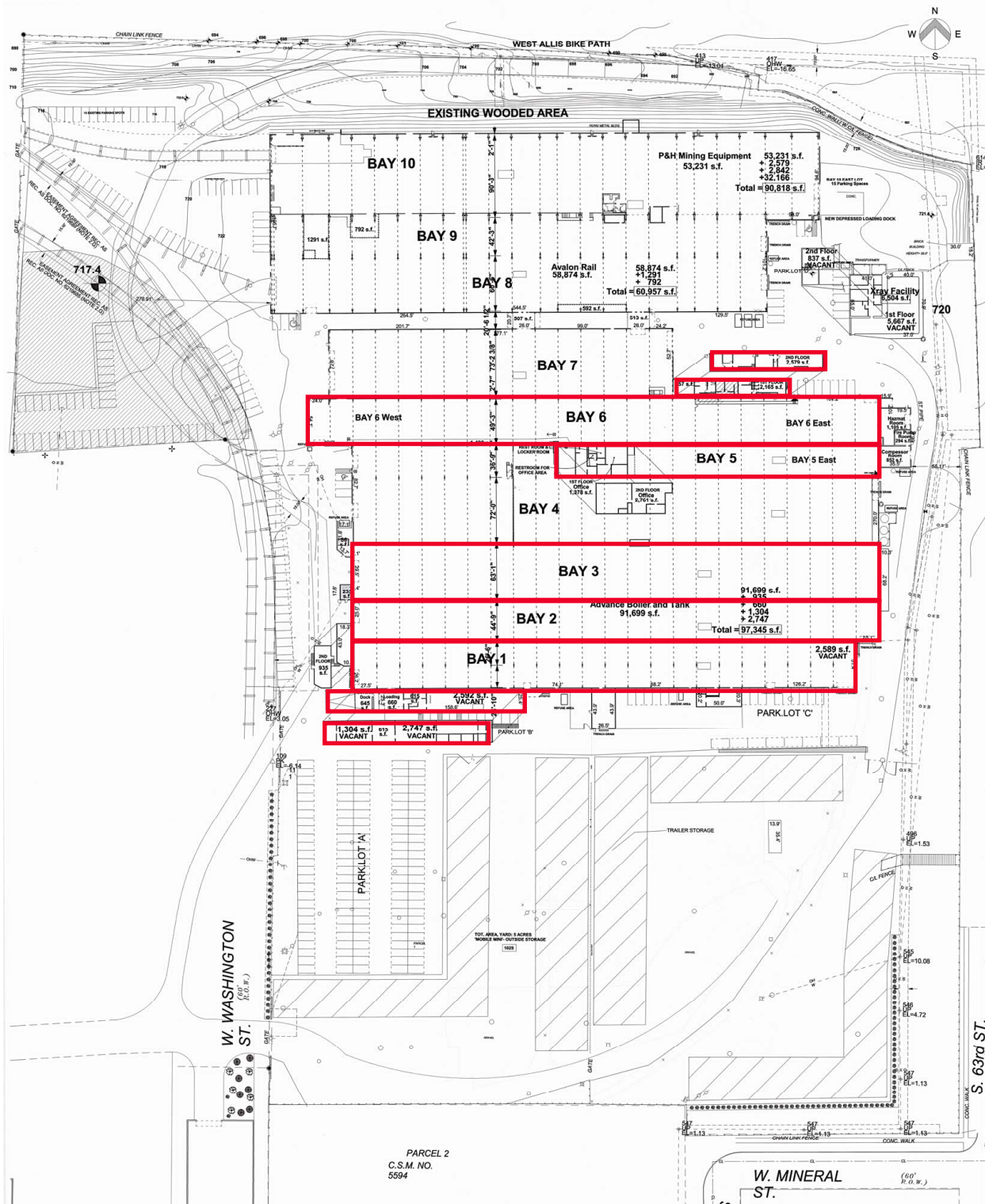
Nick Unger
 Real Estate Advisor
 414.203.3016
 nunger@boerke.com

731 N Jackson Street
 Suite 700
 Milwaukee, WI 53202
 Main: 414.347.1000
boerke.com



BOERKE

FOR LEASE
HEAVY CRANE BAY SPACE
6600 W Washington Street
West Allis, WI 53214



Jeff Hoffman, CCIM, SIOR
Principal
414.203.3038
jhoffman@boerke.com

Chad Vande Zande, SIOR
Principal
414.203.3049
cvandezande@boerke.com

Nick Unger
Real Estate Advisor
414.203.3016
nunger@boerke.com

731 N Jackson Street
Suite 700
Milwaukee, WI 53202
Main: 414.347.1000
boerke.com

The Boerke Company / Independently Owned and Operated / A Member of the Cushman & Wakefield Alliance
Cushman & Wakefield Copyright 2021 No warranty or representation, express or implied, is made to the accuracy or completeness of the information contained herein, and same is submitted subject to errors, omissions, change of price, rental or other conditions, withdrawal without notice, and to any special listing conditions imposed by the property owner(s). As applicable, we make no representation as to the condition of the property (or properties) in question.



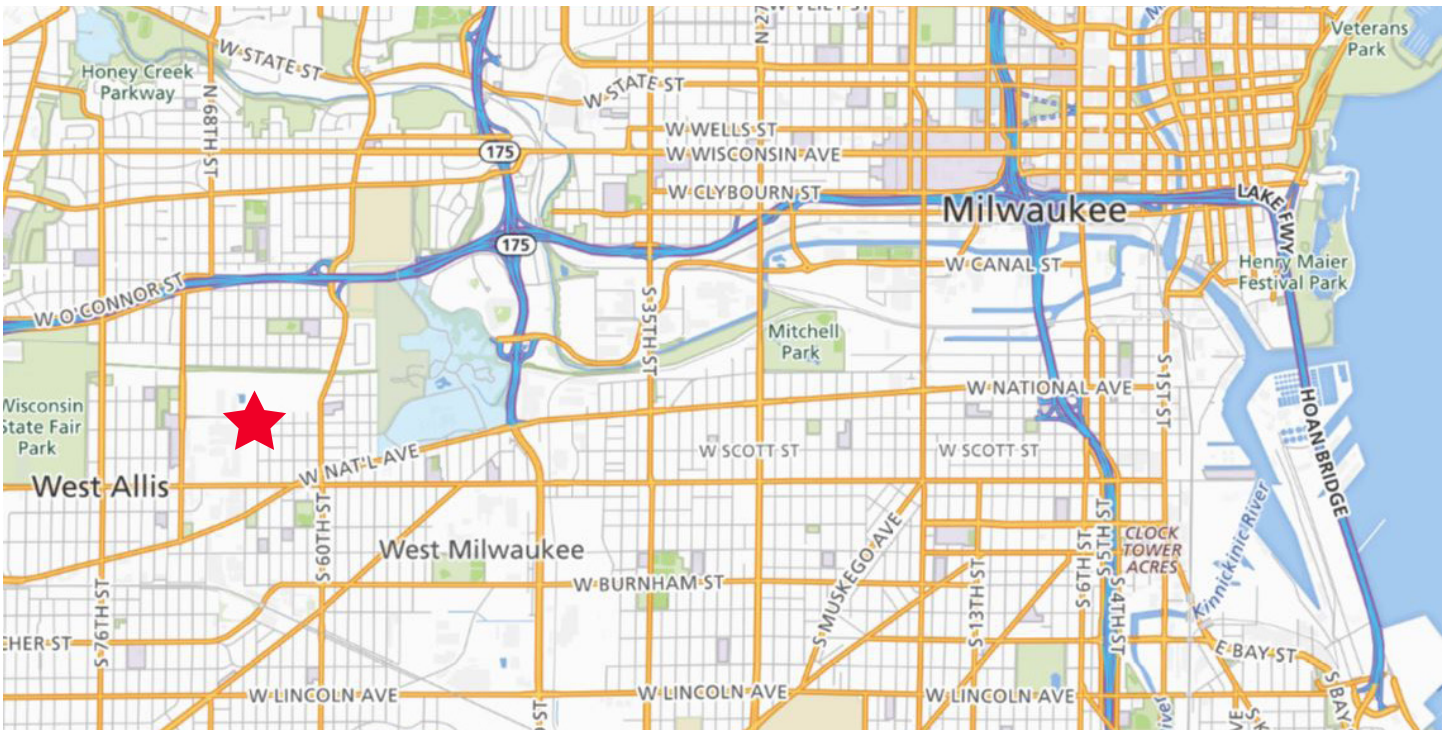
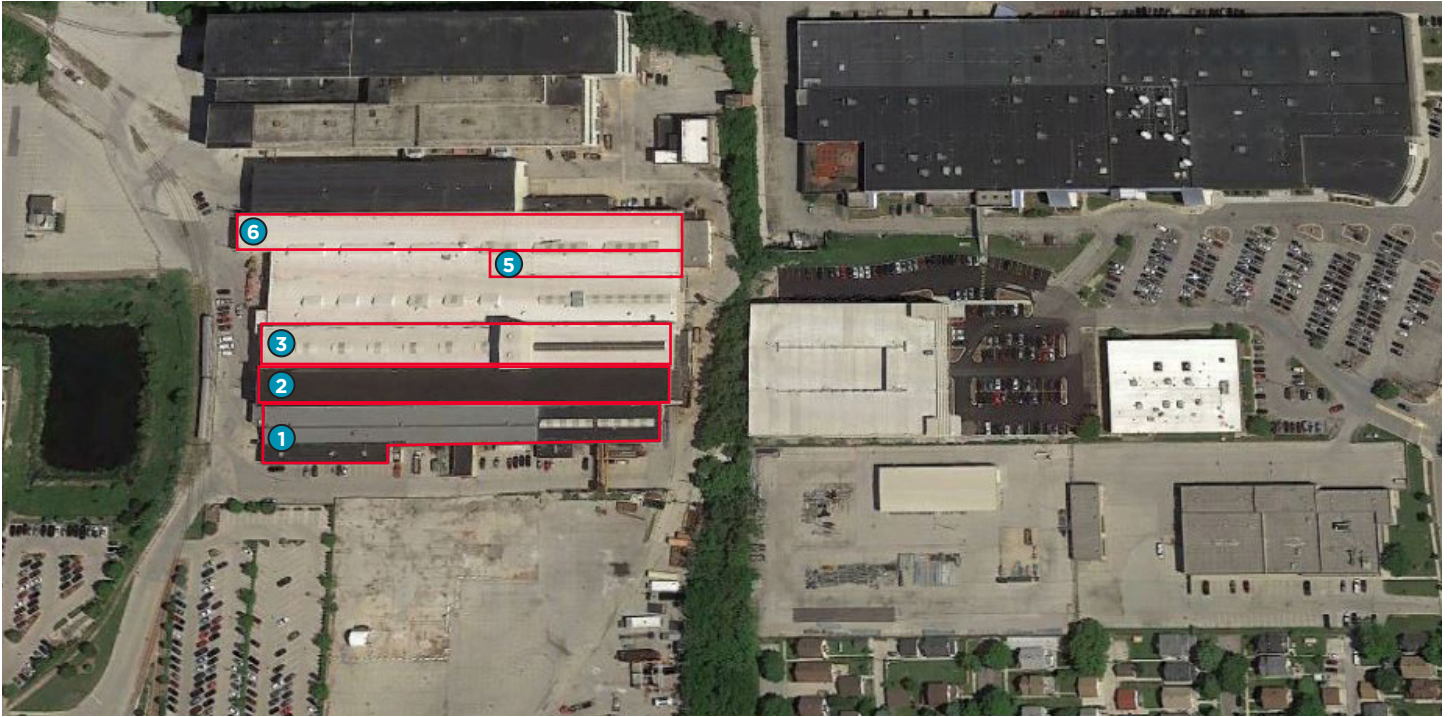
BOERKE

FOR LEASE

HEAVY CRANE BAY SPACE

6600 W Washington Street

West Allis, WI 53214



Jeff Hoffman, CCIM, SIOR
Principal
414.203.3038
jhoffman@boerke.com

Chad Vande Zande, SIOR
Principal
414.203.3049
cvandezande@boerke.com

Nick Unger
Real Estate Advisor
414.203.3016
nunger@boerke.com

731 N Jackson Street
Suite 700
Milwaukee, WI 53202
Main: 414.347.1000
boerke.com

The Boerke Company / Independently Owned and Operated / A Member of the Cushman & Wakefield Alliance
Cushman & Wakefield Copyright 2016. No warranty or representation, express or implied, is made to the accuracy or completeness of the information contained herein, and same is submitted subject to errors, omissions, change of price, rental or other conditions, withdrawal without notice, and to any special listing conditions imposed by the property owner(s). As applicable, we make no representation as to the condition of the property (or properties) in question.

STATE OF WISCONSIN

Disclosure To Non-Residential Customers

Prior to negotiating on your behalf the brokerage firm, or an agent associated with the firm, must provide you the following disclosure statement:

DISCLOSURE TO CUSTOMERS

You are a customer of the brokerage firm (hereinafter Firm). The Firm is either an agent of another party in the transaction or a subagent of another firm that is the agent of another party in the transaction. A broker or a salesperson acting on behalf of the Firm may provide brokerage services to you. Whenever the Firm is providing brokerage services to you, the Firm and its brokers and salespersons (hereinafter Agents) owe you, the customer, the following duties:

- (a) The duty to provide brokerage services to you fairly and honestly.
- (b) The duty to exercise reasonable skill and care in providing brokerage services to you.
- (c) The duty to provide you with accurate information about market conditions within a reasonable time if you request it, unless disclosure of the information is prohibited by law.
- (d) The duty to disclose to you in writing certain Material Adverse Facts about a property, unless disclosure of the information is prohibited by law. (See Definition of Material Adverse Facts below).
- (e) The duty to protect your confidentiality. Unless the law requires it, the Firm and its Agents will not disclose your confidential information or the confidential information of other parties.
- (f) The duty to safeguard trust funds and proposals in an objective and unbiased manner and disclose the advantages and disadvantages of the proposals. other property held by the Firm or its Agents.
- (g) The duty, when negotiating, to present contract proposals in an objective and unbiased manner and disclose the advantages and disadvantages of the proposals.
- Please review this information carefully. An Agent of the Firm can answer your questions about brokerage services, but if you need legal advice, tax advice, or a professional home inspection, contact an attorney, tax advisor, or home inspector. This disclosure is required by section 452.135 of the Wisconsin statutes and is for information only. It is a plain-language summary of the duties owed to a customer under section 452.133(1) of the Wisconsin statutes.

CONFIDENTIALITY NOTICE TO CUSTOMERS

The Firm and its Agents will keep confidential any information given to the Firm or its Agents in confidence, or any information obtained by the Firm and its Agents that a reasonable person would want to be kept confidential, unless the information must be disclosed by law or you authorize the Firm to disclose particular information. The Firm and its Agents shall continue to keep the information confidential after the Firm is no longer providing brokerage services to you.

- The following information is required to be disclosed by law:
 1. Material Adverse Facts, as defined in Wis. Stat. § 452.01(5g) (see "Definition of Material Adverse Facts" below).
 2. Any facts known by the Firm or its Agents that contradict any information included in a written inspection report on the property or real estate that is the subject of the transaction.

To ensure that the Firm and its Agents are aware of what specific information you consider confidential, you may list that information below. At a later time, you may also provide the Firm or its Agents with other information you consider to be confidential.

CONFIDENTIAL INFORMATION:

NON- CONFIDENTIAL INFORMATION (the following information may be disclosed by the Firm and its Agents):

(Insert information you authorize to be disclosed, such as financial qualification information.)

DEFINITION OF MATERIAL ADVERSE FACTS

A "Material Adverse Fact" is defined in Wis. Stat. § 452.01(5g) as an Adverse Fact that a party indicates is of such significance, or that is generally recognized by a competent licensee as being of such significance to a reasonable party, that it affects or would affect the party's decision to enter into a contract or agreement concerning a transaction or affects or would affect the party's decision about the terms of such a contract or agreement.

An "Adverse Fact" is defined in Wis. Stat. § 452.01(1e) as a condition or occurrence that a competent licensee generally recognizes will significantly and adversely affect the value of the property, significantly reduce the structural integrity of improvements to real estate, or present a significant health risk to occupants of the property; or information that indicates that a party to a transaction is not able to or does not intend to meet his or her obligations under a contract or agreement made concerning the transaction.

NOTICE ABOUT SEX OFFENDER REGISTRY

You may obtain information about the sex offender registry and persons registered with the registry by contacting the Wisconsin Department of Corrections on the Internet at <http://www.doc.wi.gov> or by telephone at 608-240-5830.