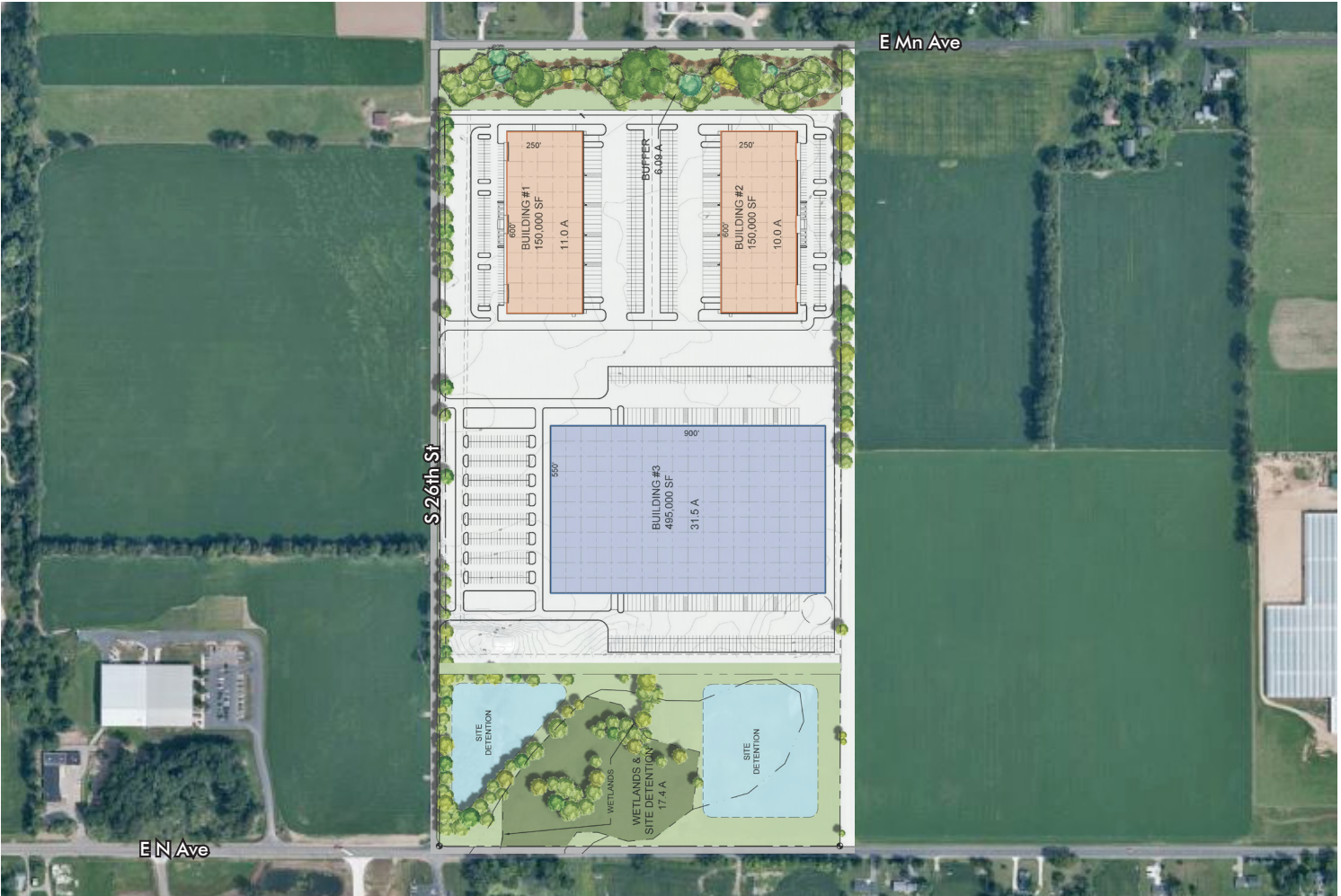


# SOUTHWEST MICHIGAN COMMERCE PARK

S 26th Street | Kalamazoo, MI 49048



www.AdvantageCRE.com



## BUILD- TO-SUIT

100,000 SF to  
800,000 SF

Southwest Michigan Commerce Park is one of the last remaining available parcels of land zoned industrial in the greater Kalamazoo market. Located at the corner of S 26th Street and N Avenue, this 80-acre parcel of prime industrial land has excellent accessibility, all utilities are to the site and frontage along two all weather roads. Recently zoned to light industrial, allowing for manufacturing or warehousing needs. This property provides a fantastic build-to-suit opportunity through the developer of the site, Franklin Partners, .

This parcel can accommodate multiple size and layouts of facilities and is located on an all weather road designed for truck traffic.

**CONTACT** DUKE SUWYN SIOR, CCIM  
direct 616 327 2615  
mobile 616 581 7777  
Duke.Suwyn@AdvantageCRE.com

Developed by



www.franklinpartners.net

# SOUTHWEST MICHIGAN COMMERCE PARK

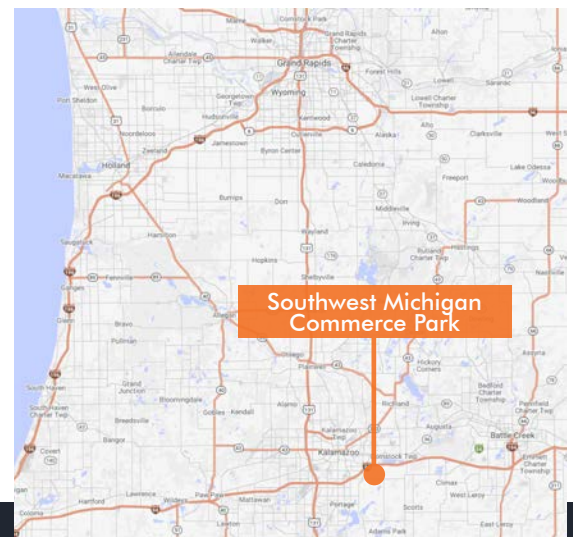
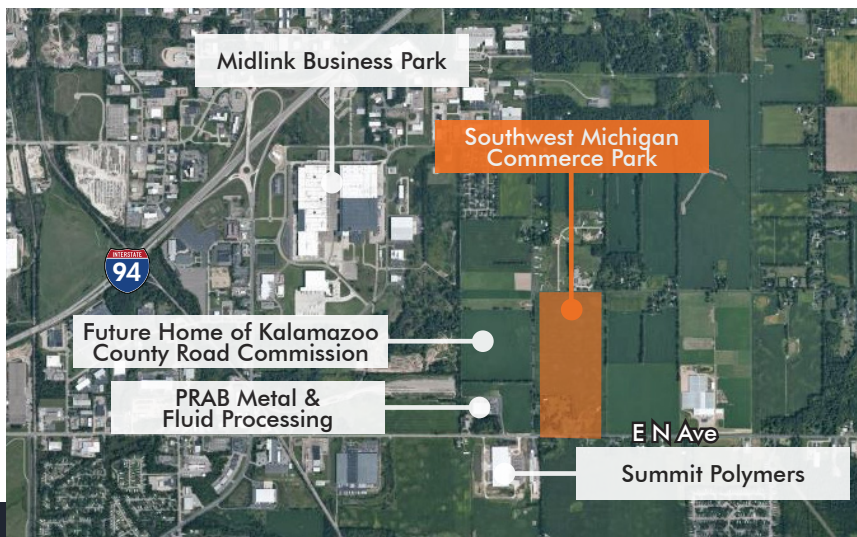
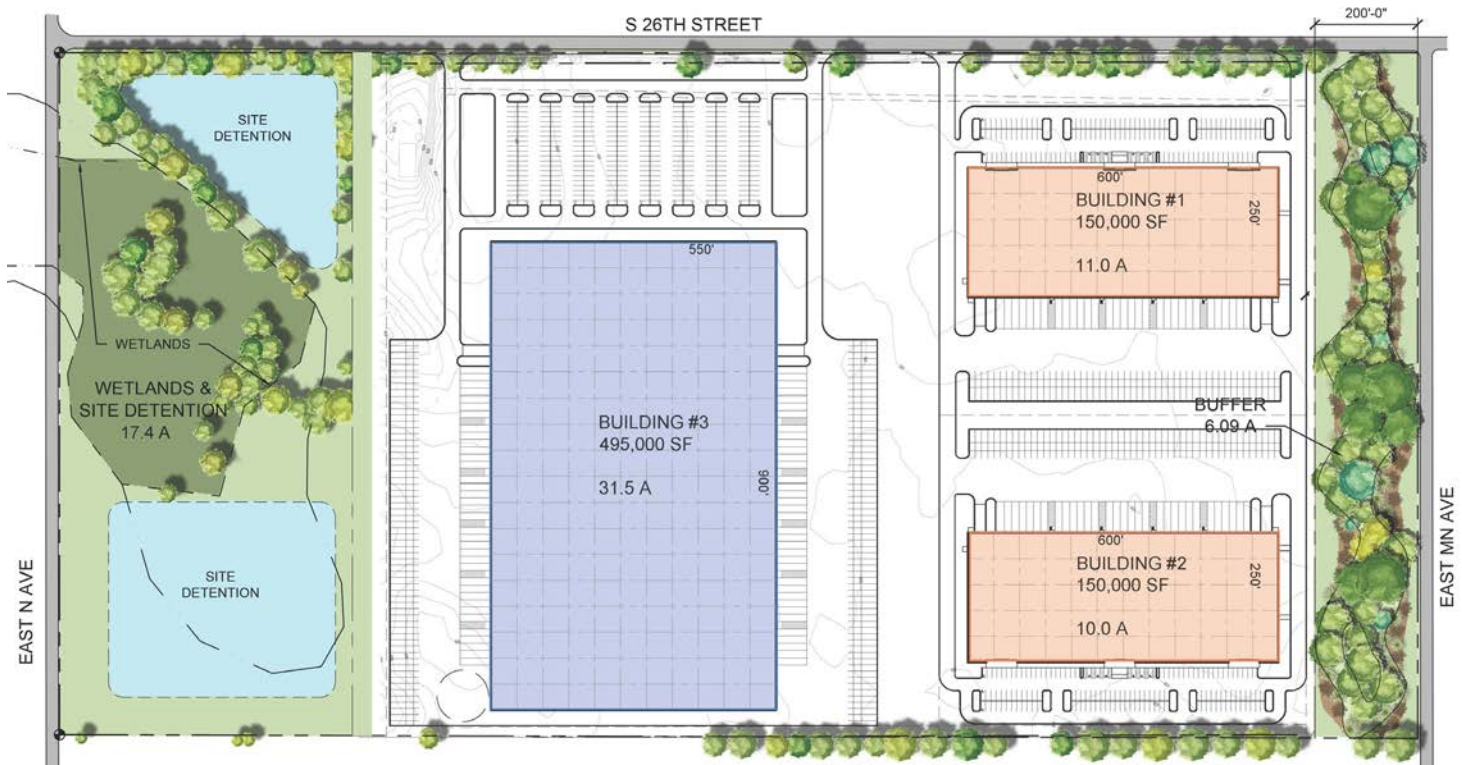
S 26th Street | Kalamazoo, MI 49048



## PROPERTY DETAILS

Total Area: 80 Acres  
 Potential Industrial: 795,000 SF

[CLICK FOR FULL ZONING ORDINANCE](#)



Updated 6/8/2021

1575 Arboretum Drive SE, Suite 402 | Grand Rapids, MI 49546 | 616 327 2800 | [www.AdvantageCRE.com](http://www.AdvantageCRE.com)

Advantage Commercial Real Estate has made every effort to obtain the information regarding these listings from sources deemed reliable. However, we cannot warrant the complete accuracy thereof subject to errors, omissions, change of price, rental or other conditions, prior sale, lease or financing, or withdrawal without notice.

Developed by



[www.franklinpartners.net](http://www.franklinpartners.net)